



Model SG14S with Options Tube Fired Gas Fryer

Model SG14S w/Options

Project _____

Item number _____

Quantity _____



STANDARD SPECIFICATIONS

CONSTRUCTION

- Welded tank with an extra smooth peened finish ensures easy cleaning.
- Long-lasting, high-temperature alloy stainless steel heat baffles are mounted in the heat exchanger tubes to provide maximum heating and combustion efficiency.
- Standing pilot light design provides a ready flame when heat is required.
- Stainless steel front, door, side, and splashback.
- Heavy duty 3/16" (.48 cm) door hinge.

CONTROLS

- Millivolt thermostat maintains selected temperature automatically between 200°F (93°C) and 400°F (190°C-CE).
 - Integrated gas control valve acts as a manual and pilot valve, automatic pilot valve, gas filter, pressure regulator, and automatic main valve.
 - Gas control valve prevents gas flow to the main burner until pilot is established and shuts off all gas flow automatically if the pilot flame goes out.
 - Temperature limit switch safely shuts off all gas flow if the fryer temperature exceeds the upper limit.
 - New Solstice burner/baffle design.***
 - Increases cooking production.
 - Lowers flue temperature.
 - Improves working environment.
 - Generates more production per BTU.
- ***Compared to previous models.

OPERATIONS

- Front 1 1/4" (3.2 cm) full port drain for quick draining.
- 9" (22.9 cm) clearance allows for ease of cleaning.

STANDARD ACCESSORIES

- Choice of basket options
 - Two nickel-plated, oblong, wire mesh baskets
 - One nickel-plated, square, wire mesh basket
- One nickel-plated tube rack
- One drain extension
- One drain line clean-out rod
- Fryer cleaner sample
- Rear gas connection
- Manual gas shutoff
- 1 1/4" (3.2 cm) full port drain valve
- Built-in integrated flue deflector
- Removable basket hanger for easy cleaning
- 9" (22.9 cm) adjustable legs
- Cabinet - stainless steel front, door, and sides
- Tank - stainless steel

AVAILABLE OPTIONS & ACCESSORIES

- Stainless steel back
- Basket Lift*
- Solid State Thermostat**
- Digital controller**
- Triple baskets
- Covers
- Intellifry computer control**
- Computer back-up thermostat
- 9" (22.9 cm) adjustable casters

*Only available with digital or computer controls.

**Includes matchless ignition, melt cycle, and drain valve interlock switch.

APPROVALS

- CSA Certified (AGA, CGA)
- NSF Listed
- MEA Approved
- CE Certified
- Australian Gas Assoc. Certified (AuGA)



Patent Pending

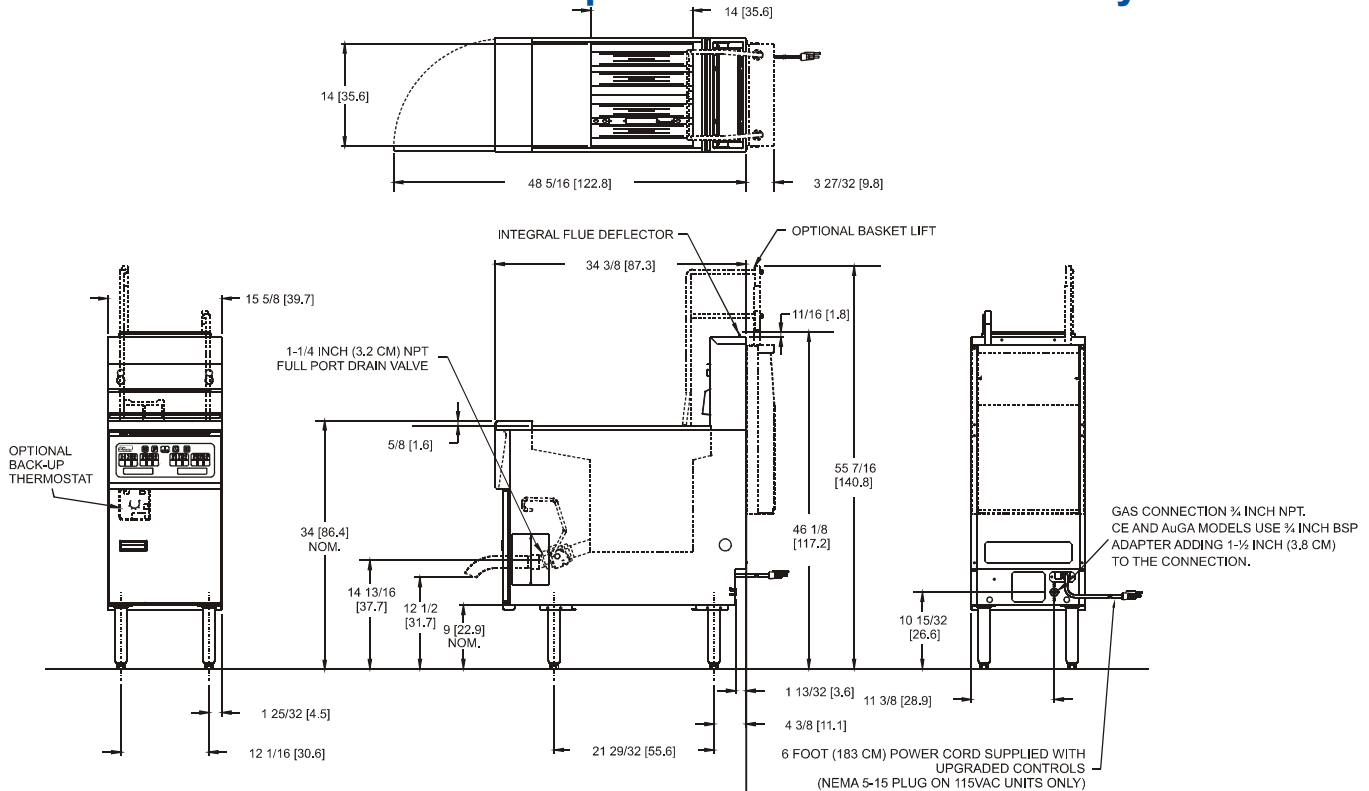
Pitco Frialator, Inc., P.O. Box 501, Concord, NH 03302-0501 • 509 Route 3A, Bow NH 03304, USA
Phone (603) 225-6684 • Fax (603) 225-8472 • www.pitco.com



L10-123 Rev 5 (02/07)



Model SG14S with Options - Tube Fired Gas Fryer



| GAS REQUIREMENTS | | | |
|--|--|--|---|
| Gas Input Per Hour | | | |
| 110,000 BTUs / 33 kW (CE) / 119 megajoules (AuGA) | | | |
| Gas Type* | Recommended Minimum Store Manifold Pressure | Burner Manifold Pressure | *For other gas types, contact your Dealer/Distributor. |
| Natural Gas | 7" W.C. / 17.4 mbars / 1.75 kPa | 4" W.C. / 10 mbars / 1 kPa | Check plumbing/gas codes for proper gas supply line sizing. |
| L.P. Gas | 13" W.C. / 32.4 mbars / 3.25 kPa | 10" W.C. / 25 mbars / 2.5 kPa | |
| Clearance Information | Fryer Front | Fryer Sides, Rear, Bottom to any combustible material | Fryer Flue Area |
| All Models | 30" (76.2 cm) min. | 6" (15.2 cm) Do not Curb Mount | Do not block or restrict the flue gasses from flowing into the ventilation system. |
| ELECTRICAL | | OIL CAPACITY | |
| Control Type | Voltage / Phase / Frequency | Amps | 40 - 50 pounds (18 - 23 kg) |
| Millivolt | Not required | 0 | PERFORMANCE CHARACTERISTICS |
| Upgraded controls (solid state, digital, computer, basket lift) | 115 / 1 / 60 | 1.7 | |
| | 220-230-240 / 1 / 50 | 0.9 | |
| Upgraded controls options include matchless ignition, melt cycle and drain valve interlock at no additional amps. | | | Cooks 88 lbs (40 kg) of fries per hour Frying Area 14 x 14 x 4 in (35.6 x 35.6 x 10.2 cm) |
| SHIPPING INFORMATION | | | |
| Model | Shipping Weight | Shipping Cube | Shipping H x W x L |
| Single Millivolt | 190 lbs | 19 ft. ³ | 45 1/4 x 18 3/4 x 38 1/2 in |
| | 86 kg | .54 m ³ | 114.9 x 47.6 x 97.8 cm |
| Single Upgraded Controls | 200 lbs □ | 33 ft. ³ | 58 x 22 1/2 x 43 1/2 in |
| | 91 kg | .93 m ³ | 147.3 x 57.2 x 110.5 cm |
| □ Add 50 lbs (23 kg) for Basket Lifts | | | |
| SHORT FORM SPECIFICATION | | | |
| Provide Pitco Model SG14S tube fired gas fryer. Fryer shall have an atmospheric burner system combined with four stainless steel heat tubes utilizing high temperature alloy stainless steel baffles. Fryer shall have a deep cool zone; minimum 23% of total oil capacity to trap burnt particles, crumbs and black specks. Fryer cooking area shall be 14" x 14" (35.6 cm x 35.6 cm) with a cooking depth of 4" (10.2 cm). Heat transfer area shall be a minimum of 600 sq. inches (3,871 sq. cm). Provide accessories as follows: | | | |
| TYPICAL APPLICATION | | | |
| Frying a wide variety of foods in a limited amount of space. Frying that requires a high volume production rate. | | | |

